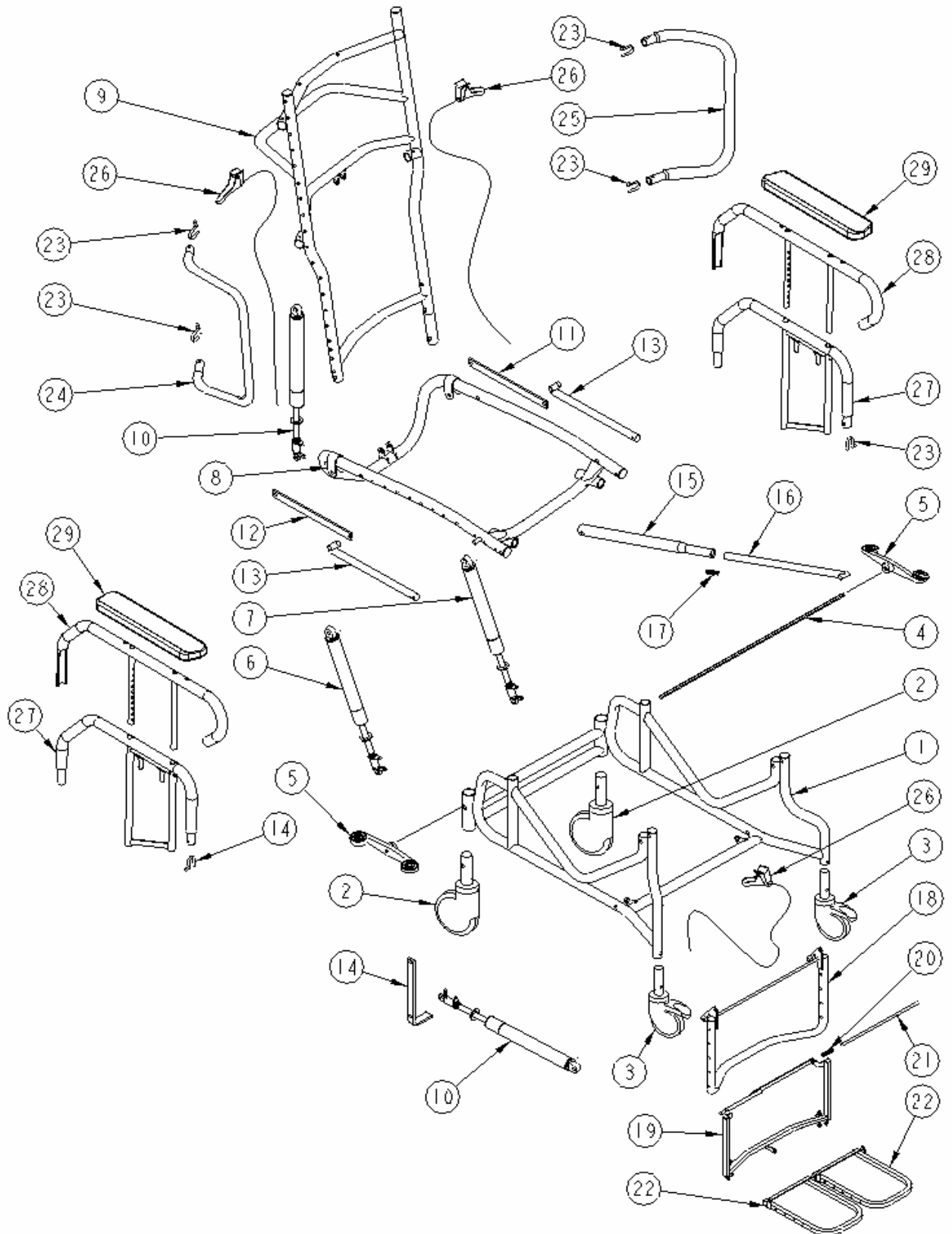


Broda Seating 785 Parts Schematic Drawing

(For Chairs Built After September 8,2000)

February 2004



Broda Seating 785 Parts Schematic Legend

(For Chairs Built After September 8,2000)

February 2004

#	Description	Part Number
1.	Base for Model 785	FCP-18/20-785-B500
2.	6" Tente Single Directional Locking Rear Caster	PRT-CASTERT6"
3.	5" Total Lock Plastic Tente Caster	PRT-CASTER5" PT
4.	Control Rod for PRT-CASTER6" SL	FCP-18/20-HEXROD
5.	Control Pedal for PRT-CASTER6" SL	PRT-MDLCPEDAL
6.	Gas Spring assembly Non Locking – specify if release head needed	PRT-PAB4NL
7.	Gas Spring assembly Locking - specify if release head needed	PRT-PAB4
8.	Seat for Model 785	FPP-18/20-785 ST00
9.	Back for Reclining Models	FCP-18/20-BACK
10.	Gas Spring assembly Locking – specify if release head needed	PRT-PAB5
11.	Legrest Ext. Bar 785 Model (Black)	FPP-785-LEGEXBR
12.	Legrest Ext. Bar 785 Model (Chrome)	FCP-785-LEGEXBR
13.	Legrest Attachment Rod for 17" Seat Depth	FSP-LGRTR0D17
14.	J Lever for 785 Legrest	FCP-JLEVER
15.	Legrest Elevation Tube 785 Model	FPP-785-LEGEXTU
16.	Legrest Elevation Rod for 17" Seat Depth	FCP-LGRTELV17
17.	2 cm x 7.5 cm Green Die Spring	ASFASANCDIESPRO
18.	Vertical Legrest	FCP-18/20-LGRT14
19.	Upper Half Double Flip Down Footrest	FCP-18/20-DFUPPER
20.	Compression Spring for Footrest Rod	ASFASPRE0000003
21.	Footrest Rod	FCP-18/20 FTRTOD
22.	Lower Half Double Flip Down Footrest	FCP-18/20 DFLOWER
23.	Retaining Spring for Removable Arms & Wings	ASFASPRO000000
24.	Removable Wing Right	FCP-W-IR-RH
25.	Removable Wing Left	FCP-W-IR-LH
26.	Cable assembly consisting of: Cable, Handle, Mounting Screw	PRT-CABLEASSEMBLY
27.	Lower Half of Adjustable Removable Arm	FCP-ARMBOTTOM03
28.	Upper Half of Adjustable Removable Arm	FCP-ARMTOP03
29.	Black Armrest comes with Mounting Screws	ACS A-3

Broda Seating 385 Phillip St. Waterloo, ON N2L 5R8

Toll free 1-800-668-0637 1-519-746-8080 Fax 1-519-746-8616 www.brodaseating.com

A Division of Mity Enterprises